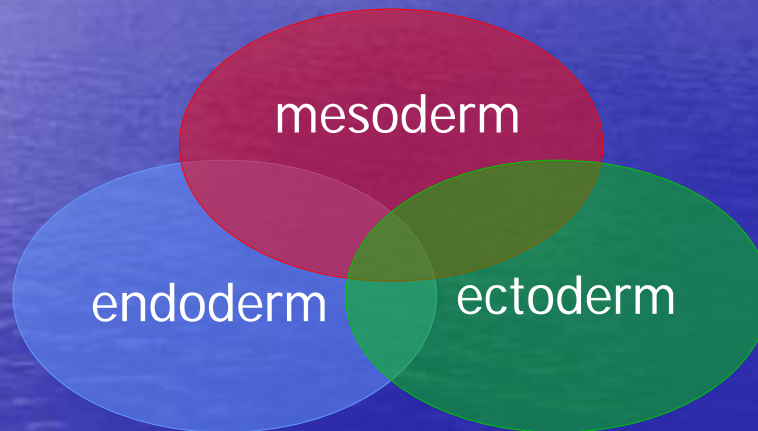


Vascular semantic resonance

Embryo - logics



Jean Ratte, MD

Agence Recherche Épistémologie Appliquée
Centre holonergétique, Montréal , Québec, Canada

Cardiovascular network

- Multiplexing waveguide; Transversal blood waves or pulse and Longitudinal parietal waves
- Interferometer; 4 zones of pericorporeal resonance for matter and 4 zones antimatter
- Resonant cavity = amplifier of cellular microtubules

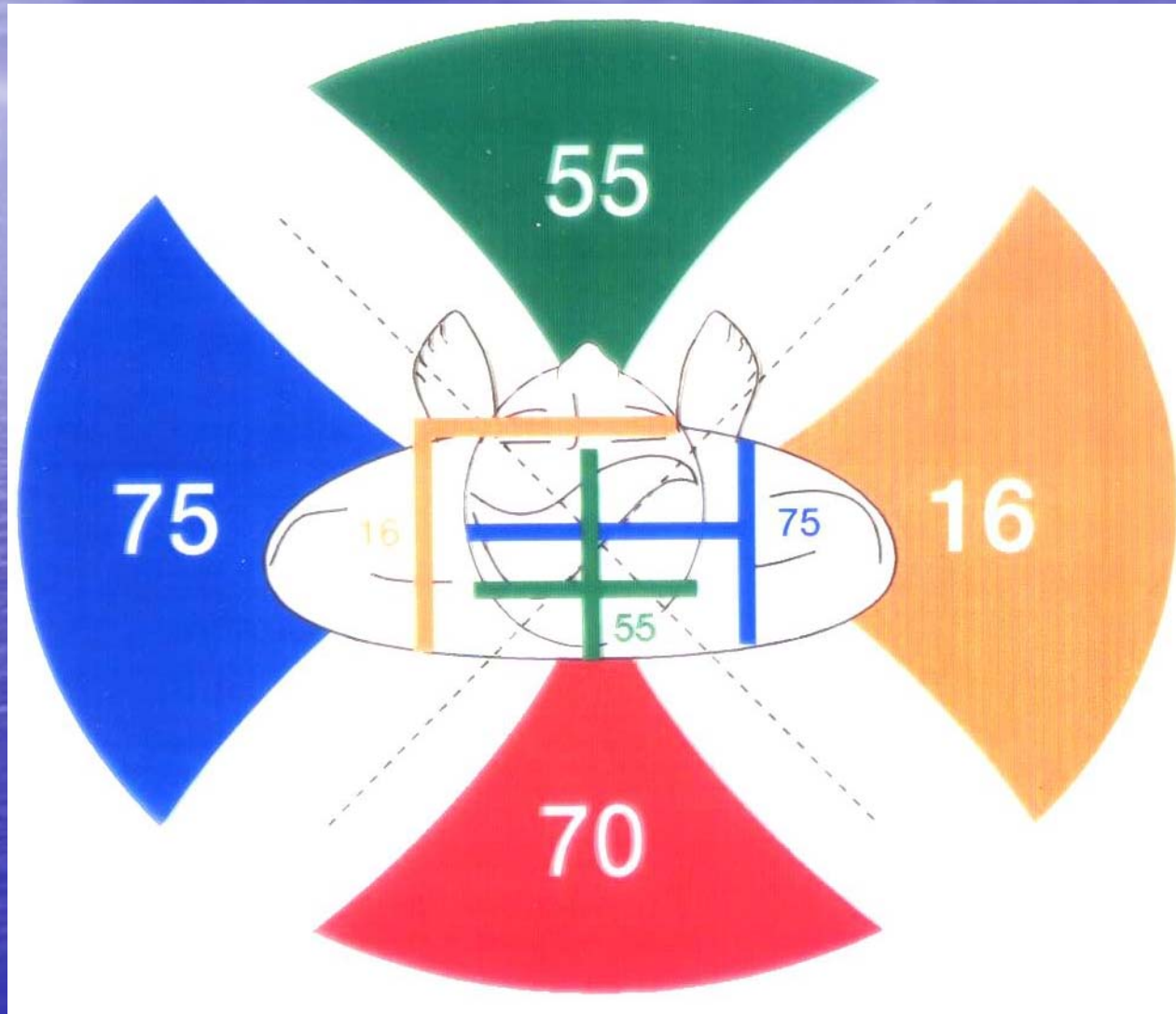
Vascular resonance

- Transversal waves; biomedical, auriculomedicine, Chinese pulses = epicritic
- Longitudinal waves; phonons = protopathic
- These longitudinal waves resonate to longitudinal vibrations, not detectable by present technology
- 6 arteries resonating to 6 different pigments (Wratten-Kodak filters)

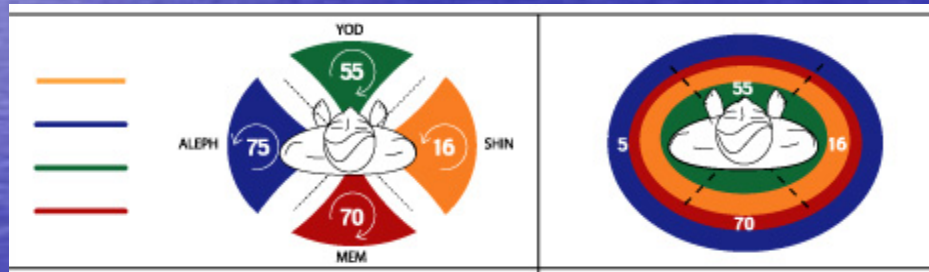
Vascular Semantic Resonance

- Biochemical resonance; pigments
- Eidetic resonance; ideograms, hieroglyphics, mandalas,
- Syntactic resonance; 4 horizontal pôles
- Semantic resonance; 2 vertical pôles

4 zones of biochemical pigment resonance

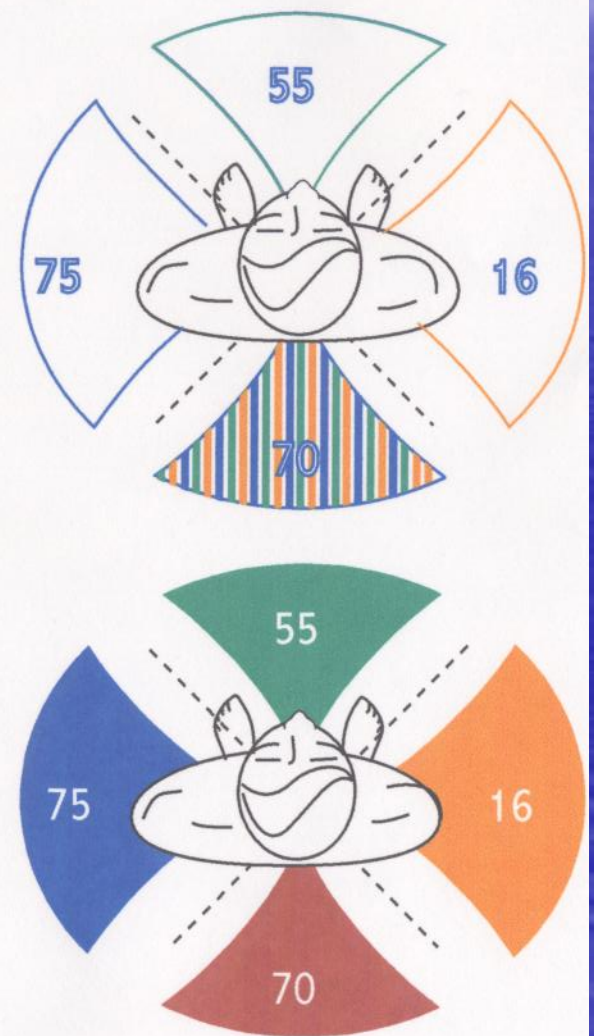


Vibratory identity between biochemical and eidetic resonance



Spectrogram 3D

Resonance of substance

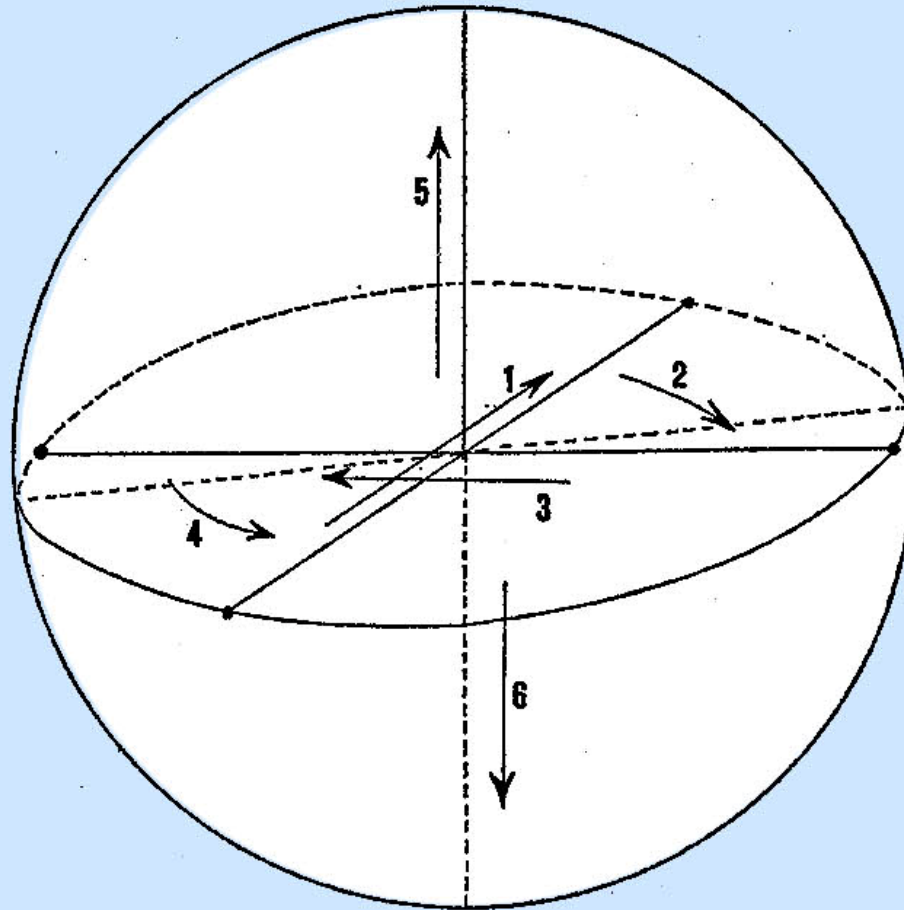


Memory of action

- Pigments, first form of memory
- Ideogram; memory of the gesture
- Map; memory of the territory
- Curve; memory of the function
- Circle; memory of circular action
- Entanglement of the rose and of the name of the rose

Ontological spherical dynamism

RAYMOND ABELLIO

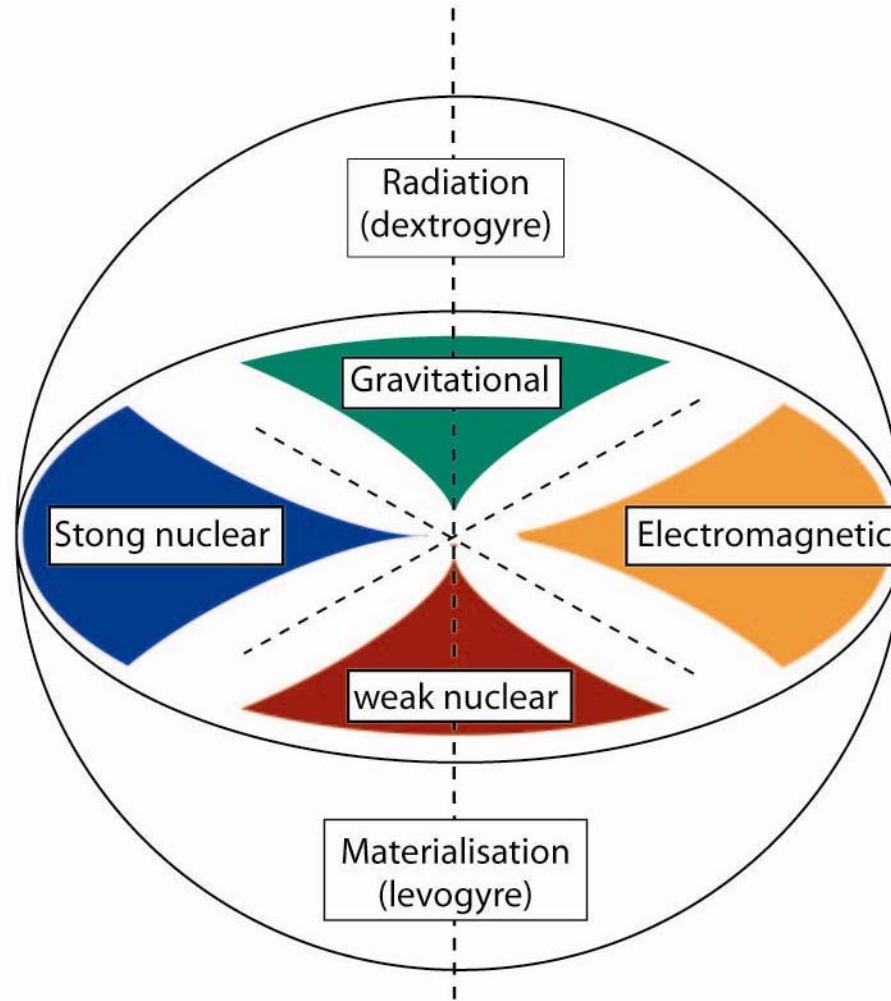


Ontological structure

Movements 1, 2, 3, 4 have to be read in diachrony and synchrony, movements 5 and 6 in synchrony only.

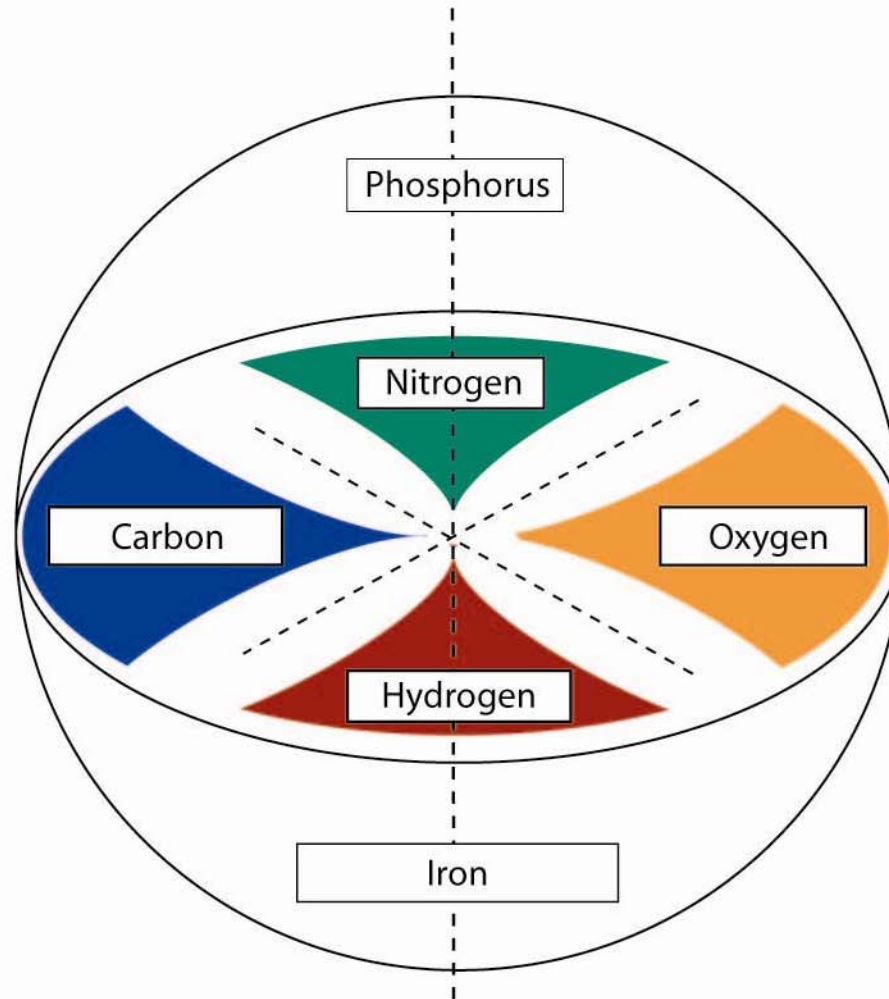
Ontological Structure

Fundamental Interactions



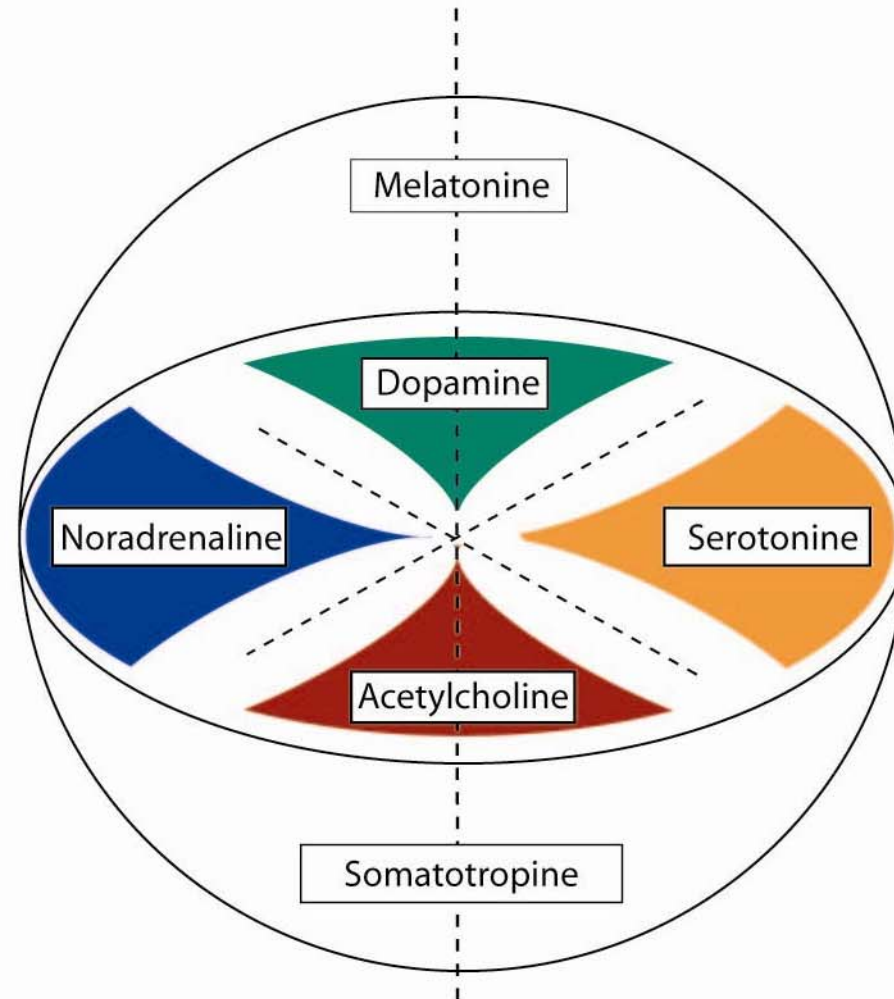
Ontological Structure

Atoms



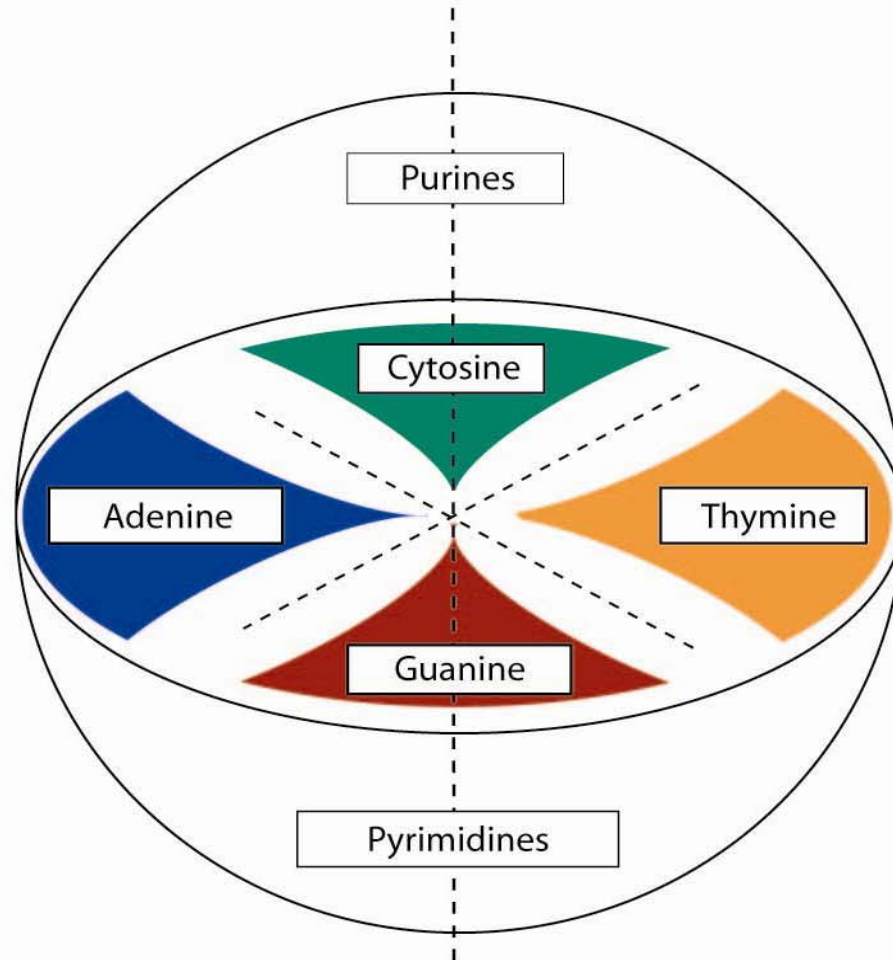
Ontological Structure

Neurotransmitters



Ontological Structure

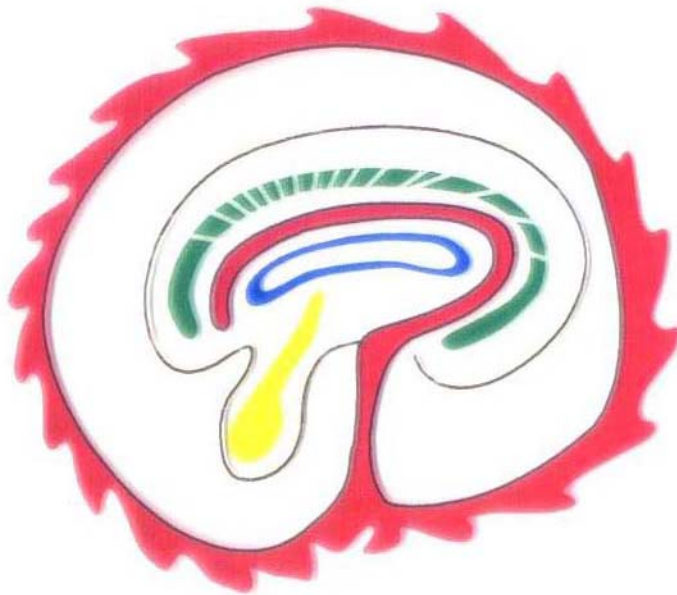
Nucleotides



ontogenesis

- Morula ; undifferentiated
- Blastula ; ectoderm and endoderm
- Gastrula ; ecto, endo and mesoderm

] embryo 3 weeks



-  ectoderm
-  endoderm
-  mesoderm

Morula

- Undifferentiated
- Resonates to Gravitation
- Resonates to Protopsychism
- Resonates to Wave Function
- Resonates to Degeneracy

Blastula

- Differentiation ectoderm- endoderm
- Polarisation of space inside/outside
- Polarisation of endodermic tube in front/oral and rear/anal

gastrula

- Differentiation of mesoderm ; intra and extra embryo
- Circular Action= circulation = cycles and circuits
- Polarisation of space in left-right (chirality)
- Rotation left or right (helicity)
- Axe of rotation= up/down
- Neuroinduction

Each layer has a different logic

- Morula ,undifferentiated, = Prelogic
- Ectoderm=Logic of non contradiction
- Endoderm= Logic of contradiction,
- Mesoderm= logic of crossed double contradiction

Logic of Morula

- Undifferentiated
- Prelogic
- Protopsychism
- Wave function
- Degeneracy (Edelman)

Logic of ectoderm

- Logic of non contradiction
- Middle excluded
- Sensory « scientific objectivity»
- Wave or particle

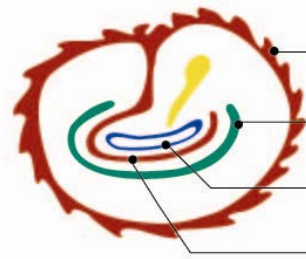
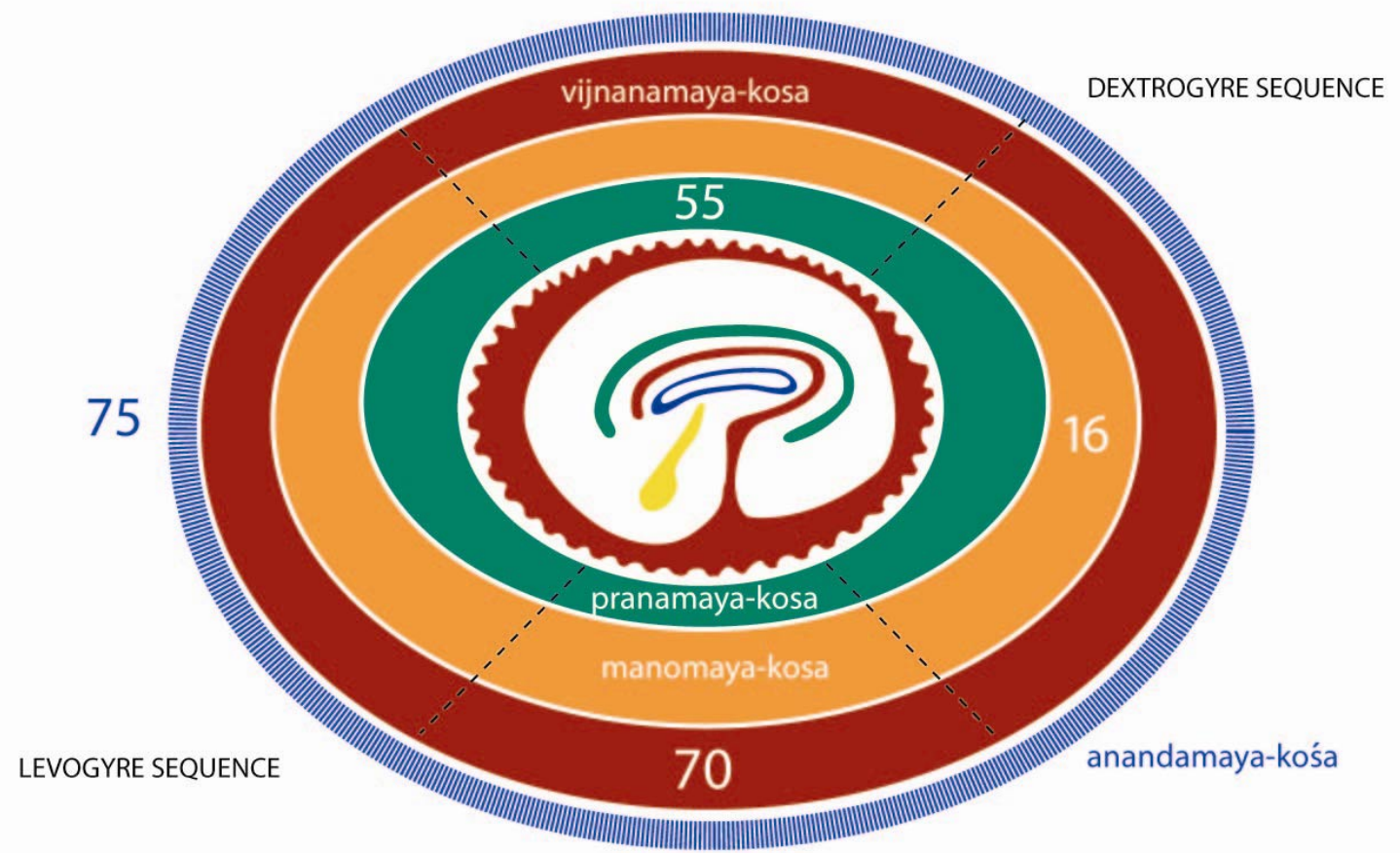
Logic of endoderm

- Logic of antagonism or contradiction
- Middle included
- Wave and particle (wavicule)

Logic of Mesoderm

- Logic of the complex domain
- Logic of Manifold. Riemann hypergeometry
- Crossed double contradiction (Abellio)
- Hyper-symmetry matter-antimatter

Embryology of Aura



- MESODERM extra = pranamaya kośa = gravitational
- ECTODERM = manomaya-kośa = electromagnetic
- ENDODERM = vijnomaya-kośa = weak nuclear
- MESODERM intra = anandamaya-kósa = stong nuclear



Communication matter-antimatter

<p>2π</p>			
<p>Trou noir 16</p>			
<p>Trou blanc 16</p>			
<p>Trou noir 75</p>			
<p>Trou blanc 75</p>			